

View From the Bridge





View from the Bridge

This is the fourth revision of the View from the Bridge.

A copy of the foundational principles of the View from the Bridge is available from the Church Office.



View from the Bridge

Our destination is determined by the Captain of the Ship, namely, Jesus Christ: the port of heaven, a place prepared for all who follow Christ.



View from the Bridge

The journey of the Ship is the life of the Church, seeking to make disciples and bring the Gospel to all humanity: simply, loving God by loving one another.

In making this journey we become aware of who we are as people of God and as a congregation.



Programmatic Boards

New Structure has Ministry Action Plans developed with Staff and programmatic Boards.

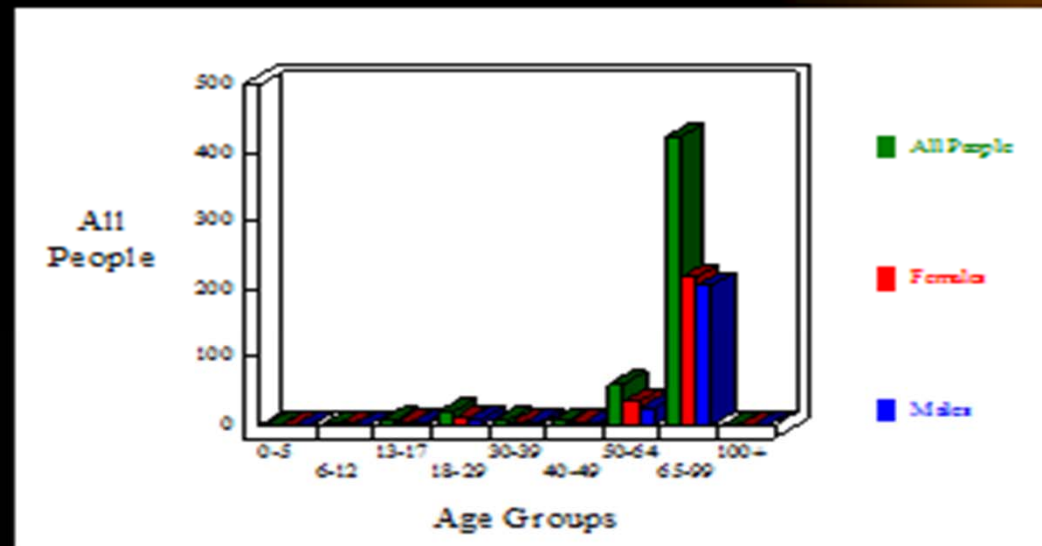
Programmatic Boards have had meetings as part of planning and budget process and meet for 15 -20 minutes on Board Night



Who Are We?

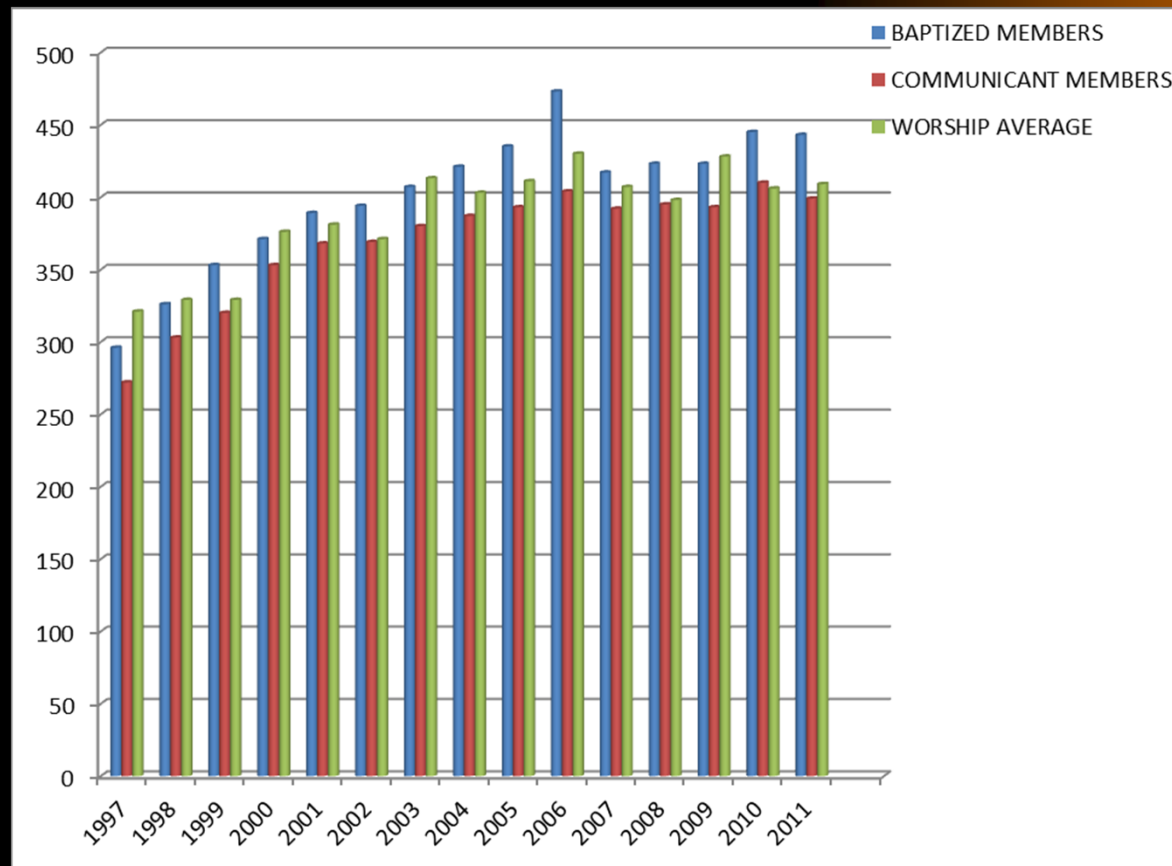
On the brink of celebrating 40 years of ministry, with a median age of 74 Marco Lutheran Church remains a dynamic congregation with a very active membership that is mission minded and open to new ideas with numerous volunteers engaged in many forms of ministry both inreach and outreach.

Who Are We?





What is our membership?





How are we doing this year?

8 Baptisms in 2012

2 Adult Baptisms in 2012

17 adult transfers and four children

16 associates



Who Are We?

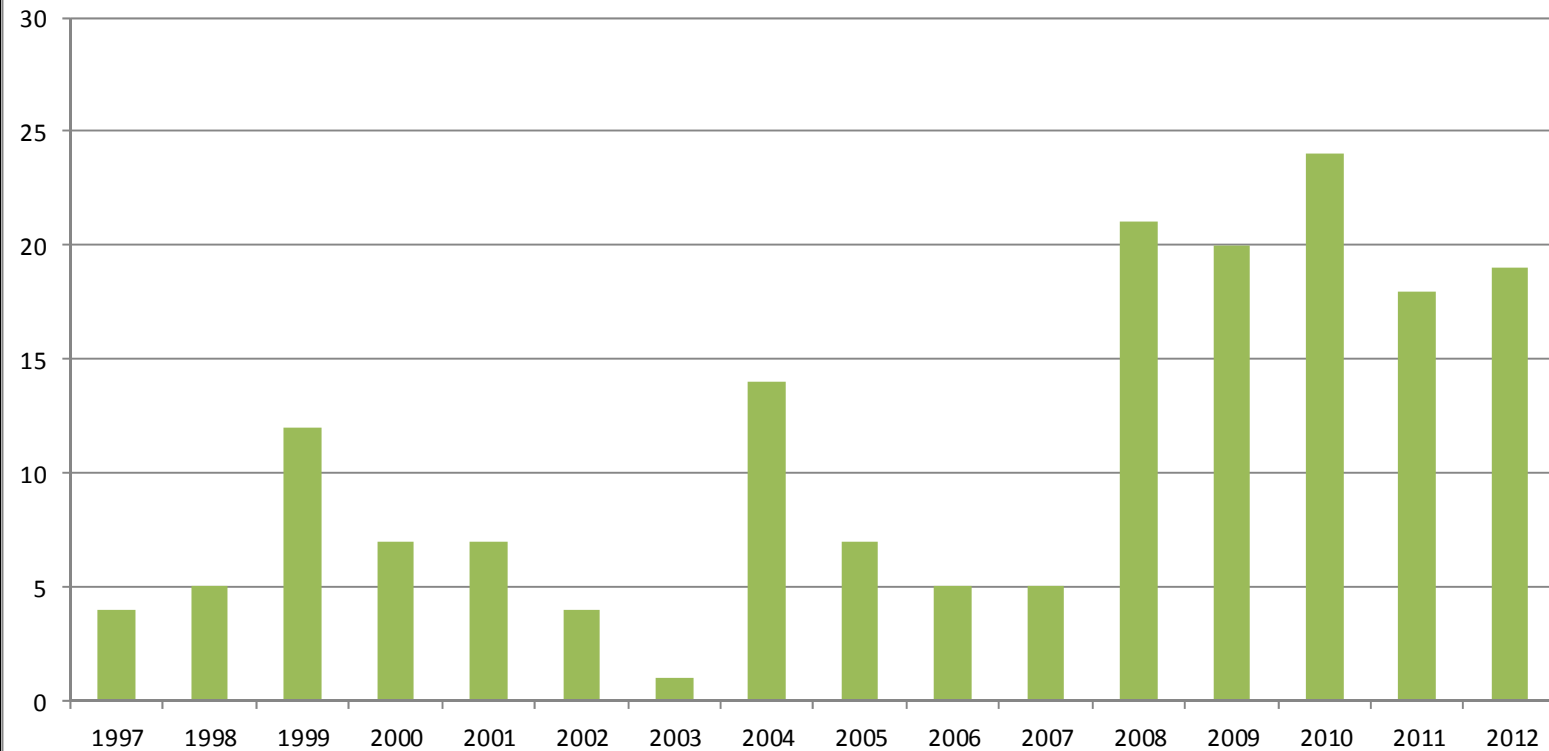
Median Age 74

Median Age of New Members 2012 is: 66

We now have 17 homebound and 50 + extremely vulnerable folks. The definition of extremely vulnerable are those who still make it to service but with great effort.



Eternal Port Of Call





Course Adjustment

Theme for 2013: Course Adjustment

Emphasis on balancing inreach and outreach

Recognition of Who We Are



Course Adjustment

20/20 - A few years ago, this committee assisted in our direction toward outreach.

This committee also lifted up the increasing need for support in the area of pastoral care, suggesting at least a seasonal pastor.



Course Adjustment

Fall of 2012 Council appointed a Pastoral Support Committee that is working on an Assistant Pastor for Marco Lutheran Church.

This is a course adjustment in line with who we have become.

Job Description will be developed by Council, Call Committee, and Staff



Course Adjustment

2012 saw all previous programming for nurture of our parish (Women's Ministry, Education, Youth, and Outreach) continue and saw our worship opportunities increase.

2012 saw Faith Rattei and Andrew return to Minnesota.

Course Adjustment

The Current



In January of 2012 we completed our first year of this weekly service. Suspended in May.

Components of the Current have progressed well with music selections performed live and with tracks with musical teams.

We need help to bring the Current back.

Course Adjustment

The Current



Bass guitarist is needed

Keyboard and guitar

Use of videos as teaching tools

Tech people



So How Do We Respond?

Our 2013 Stewardship Emphasis focuses on the Priesthood of All Believers, worship leaders, Communion ministers, Stephen Ministry, and more involvement on boards and committees.

Ministry Fair in February 9 and 10, 2013



Creation of Ministry Center

As the Welcome Center welcomes new visitors, the Ministry Center lifts up what is happening in our current ministry and gives people a chance to get involved in our shared ministry.



Creation of Ministry Center

Programmatic Boards will utilize this place to promote activities.

This will assist us in better assimilation of our membership in the execution of our events as well as in participation.



Course Adjustment

Pete Grund, a Deacon in training, is now leading our Thursday Bible Class.

Angie Miller helps us to develop and use technology

Jackie Wolff – SPLASH and Shakespeare Festival



SPLASH

10 Adults on Roster – Avg. attendance is 4 adults.

7 Children Contacts – Avg. attendance is 4 children



Discover Marco

Discover Marco (16 across 3 class offerings)

Mention tract rack



Christianity Explored

Christianity Explored 8 participants



End of Life Ministry

Communion visits made to homebound and ill

Stephen Ministry

Grief Share

End of Life planning



End of Life Ministry

Prayer Shawl Ministry

Clinging Cross

Printed Materials – Final Gifts

Journey's End

Your Guide to Grief and Bereavement

DVD Series – Comfort for the Journey



End of Life Ministry

Stephen Ministry Grief Booklets

From Here to Eternity - Symposium

Workshop on Pre planning

Grief Share

Course Adjustment

Judea and Samaria



Boomer Plus gave rise to small group emphasis called Lighthouse Harbors and resulted in initiatives with St. Matthew's House, Grace Place, and other ministries, such as Habitat for Humanity.

10-12 in regular attendance

Judea and Samaria



Estero at the top of the list for a new start.

Rev. John Roth to begin work in Estero,
installed on Feb. 3, 2013

Florida Gulf Coast University

ESL Classes Jerusalem



English as Second Language classes

First class in 2012 (Total of 20 students, 7 instructors) and the second one (10 students with some repeats, 10 instructors), with a cultural breakdown (Mexico, Venezuela, Columbia, El Salvador, Guatemala, Dominican Republic, Thailand, Haita, Indonesia, and China).

ESL CLASSES

Jerusalem



Participants in the ESL Classes also shared in the Family Bible Beach Bash.

Begins process of forming relationships with our broader church context

MOVIE NIGHTS

Jerusalem



March – 105

July – 55

January - 50

Follow up Bible Studies are being planned



EDUCATIONAL WORKSHOPS

January Rev. Kahn – Outreach to Muslims

February Dr. Frank Messina- Art and Music in Outreach

March Concordia Seminary Professor

Dr. John Kloha will be present in March 2013

Arlington of Naples *Jerusalem, Judea and Samaria*



Our second agreement for use of space at MLC has been signed between Lutheran Life and MLC – to be reviewed August 1 of 2013 and utility cost to be reviewed (\$75)

One goal is to lift up the ministry of parish nurses of Collier County. Gero Solutions

Arlington of Naples *Jerusalem, Judea and Samaria*



Gero Solutions will assist those founders in making the move to the Arlington when it is completed.

Gero Solutions is seeking to develop a presence in Collier County, lifting up Lutheran Life Communities.

Arlington of Naples
Jerusalem, Judea and Samaria



Two staff from Lutheran Life

Carolyn Gordon – Transition Concierge

Pat Rehlberg – Wellness Concierge

Arlington of Naples *Jerusalem, Judea and Samaria*



Open to hosting other events for the Founders of Lutheran Life Community

Budget forecast would only be for use of Great Room and would be covered by Lutheran Life.

They are at 72% sold out. At 75% building can begin.

Lutheran Life Communities Jerusalem, Judea and Samaria



Hosted our recent Symposium

Dr. Rich Bimler will be our speaker again in
2014

Farmers Market Jerusalem



Utilize non profit booth (free) monthly basis

Hand out tracks on MLC, invitations to programs of MLC such as Grief Share, Choir Cantata, Bible Study, Worship, Artist Series

Plant seeds of relationships

Farmers Market Jerusalem



Gospel Presentations

Create video/slide show of MLC mission and ministry that can be shown at the booth.



Technology

Working with past and present members, the website is being updated with a fresher appearance, is mobile ready and provides (when available) service recordings for listening or downloading.

Discussion about video streaming of our worship for our homebound, our community and seasonal membership and friends.



Web Site Development

We recognize that there is still need for refinement to more fully utilize this powerful tool for our congregation and community.

Web Site Committee has been working with a company and is ready to begin.



Marketing

Consistent use of Logo – Branding

Development of Ministry information packets

Outreach to Young People Jerusalem



Marco Island Charter Academy (MICA) –
Shakespeare Festival

Children used Great Room for Christmas
Presentation of Bethlehem Project

Outreach Jerusalem



Christmas Parade

Christmas Project with Tommy Barfield

ESL

Beach Bible Bash



Special Events

40th Anniversary of MLC

25th Anniversary of Craig Greusel



Course Adjustment

Ministry Summary: Bringing Souls to Christ

In the end, were seeds planted and environments created for sharing the Gospel and for nurturing and creating disciples?

Were people prepared for final port of call?

View From the Bridge

